




PRODUCT INFORMATION

 [Download Files](#)

 [3D Render](#)

 SUITABLE FOR EXTREME MARINE

 [Extreme Marine](#)

PLAY VALUE



 x 10
ACTIVITIES

 x 15
USERS

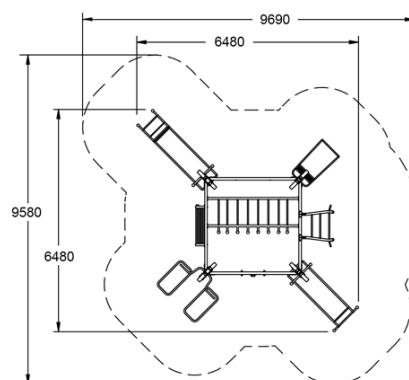
SPECIFICATIONS

Age Range	Mixed / Adult
Fall Height	2760mm
Soft-fall Area	68.90m ²
Space Req. Incl Soft-fall	9.70m x 9.60m

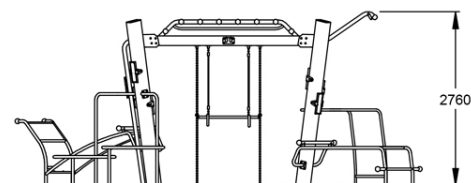
TECHNICAL INFORMATION

AUS Standards Compliance	AS4685
Install Time (Team of 2)	20 hrs
Total Weight	420 kg
Heaviest Component	45 kg
Concrete Required	1.20 m ³
Number of Footings	18

TOP VIEW



SIDE ELEVATION



[WARRANTY](#)



[CARE PLAN](#)



[COMPLIANCE](#)



[AUS MADE](#)